

Quick Installation Guide

802.11g Wireless USB Adapter



1. Introduction

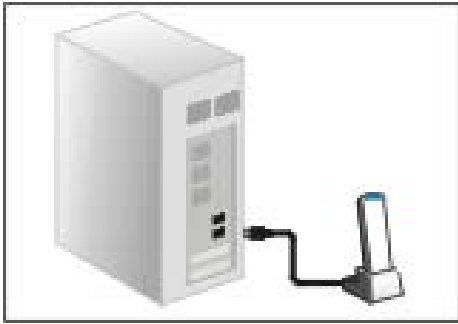
Thank you for purchasing the AZiO AWU354 802.11g Wireless USB Adapter. This Quick Installation Guide is designed to help you setup the product within the shortest time. For detailed information, please refer to the User Manual in the installation CD.

Before you begin, you must have at least the following:

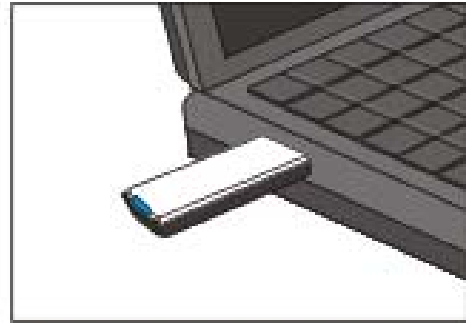
- PC with an available USB 2.0/1.1 slot
- Minimum 300MHz processor and 32MB memory
- Windows 2000, 32/64-bit XP, Vista, 7
- 802.11b/g Access Point

2. Install Your AWU354

- Power on your PC, let the operating system boot up completely, and log in as required.
- Insert the AWU354 into a USB slot.



Or



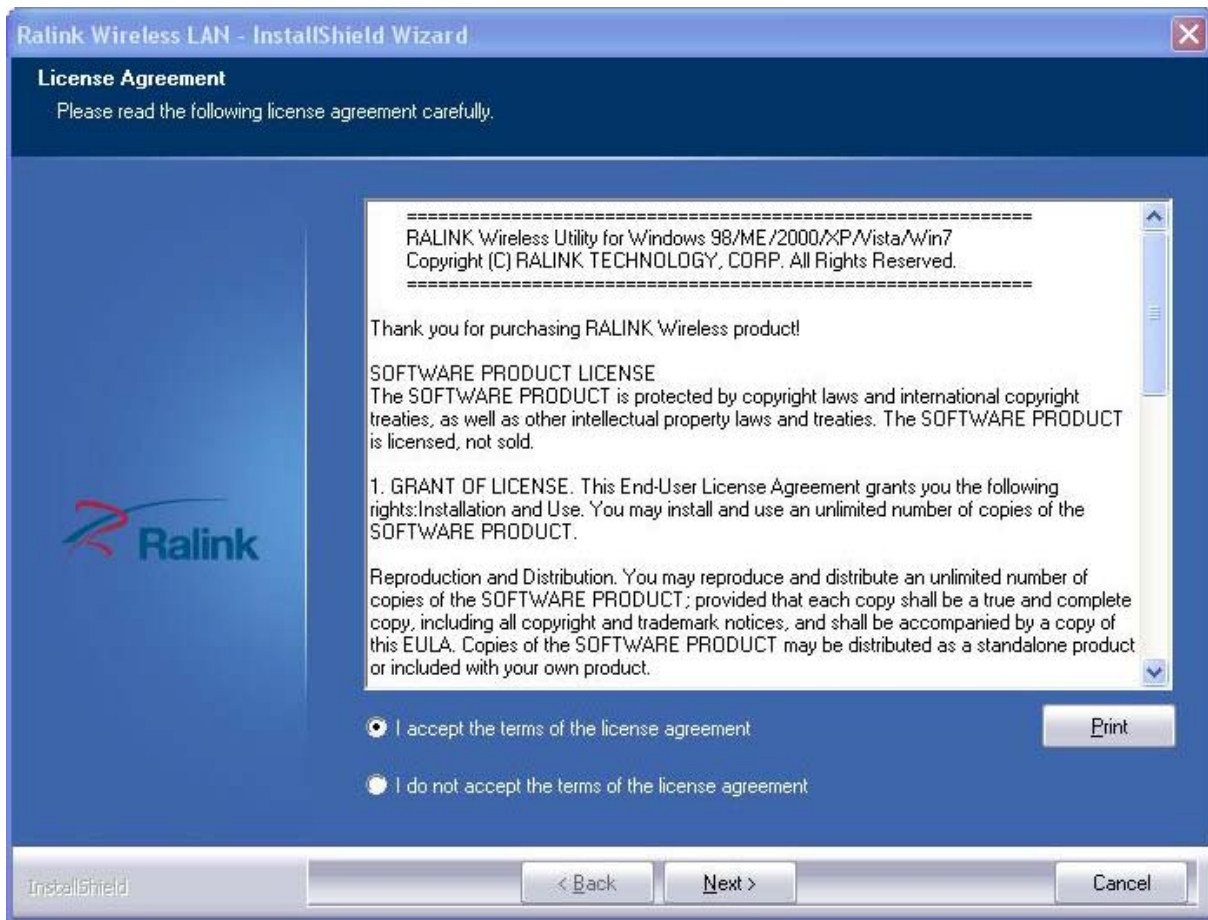
- Select **Cancel** when “Found New Hardware” window appears.



3. Install Driver and Utility

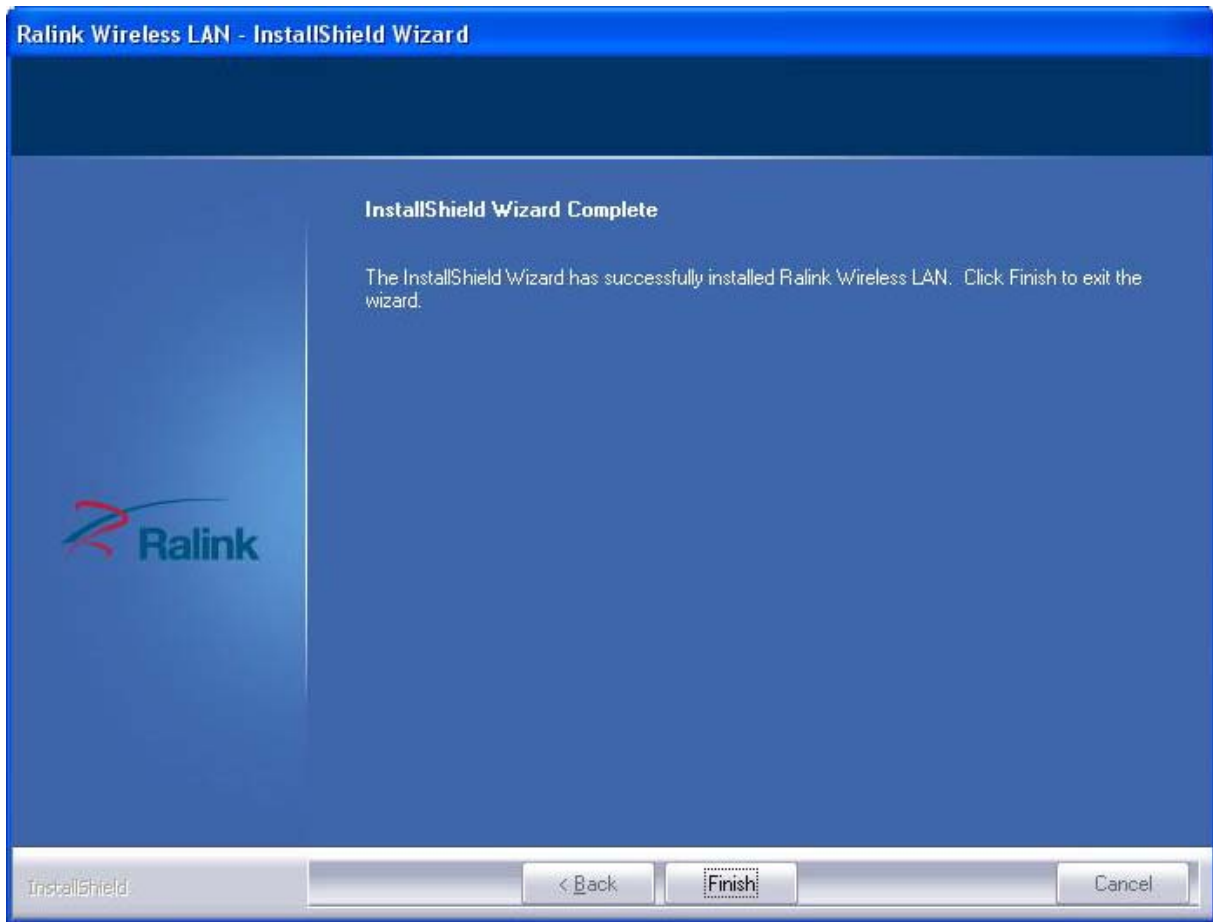
NOTE:


1. For driver updates, please visit our website at www.aziocorp.com.
 2. Snap-shot screens of the following installation procedure are based on Windows XP and current driver. Installation procedures will be similar for other windows operating systems and updated drivers.
1. Insert Installation CD to your CD-ROM drive. Browse CD and double-click **setup.exe** in Driver folder to execute it. The wizard will run and install all necessary files to your computer automatically.
 2. Click **Next** to start installation. Or click **Cancel** to cancel the installation.



3. Choose to install driver and Ralink WLAN Utility.
4. For Select Configuration Tool, select 'Ralink Configuration Tool'.
5. Click 'Install' to start the installation process.


6. Click **Finish** to complete the software installation.



You will see a tray icon  appear in your system tray at the bottom of the screen after the software and hardware installation has completed successfully.

Your AWU354 is now ready for usage.

4. Configure your AWU354

Double-click the tray icon  to launch the configuration utility.
Or right click the tray icon and select **Launch Config Utility**.

Under **Network** tab, the information from all surrounding wireless networks will be displayed.

Click **Rescan** to update and refresh. Or Select a SSID and select **Connect**.



Congratulations! You've successfully configured your AWU354.

Please refer to **User Manual** for more details and other settings.

Service & Warranty

If you need assistance with the product, please check the comprehensive user's manual included in the software CD or visit our website at www.aziocorp.com for frequently asked questions and troubleshooting tips. Otherwise, you may contact our dedicated customer care team.

There are several ways to contact us:

By Phone: (866) 468-1198

By Email: support@aziocorp.com

On LiveChat: www.aziocorp.com

Limited 1 Year Warranty

AZiO Corporation warrants this product against defect in material or workmanship for 1 year from the date of purchase. If this product proves to be defective, contact AZiO Corporation's customer care for repair or replacement of your unit. Return requests cannot be process without the proof of original date of purchase. This warranty applies only to the original purchase of the product and is not transferable. This warranty does not cover any incompatibilities due to the user's computer, hardware, software or related system configuration in which the product interfaces. The warranty does not cover any damage caused by negligence, abuse, or non-authorized modifications. To the maximum extent permitted by applicable law, in no event shall AZiO Corporation, its affiliates, or its dealers be liable for any special, incidental, indirect or consequential damages whatsoever regardless of cause or form of action.