



## Quick Installation Guide

AWU254

54M Wireless USB Adapter

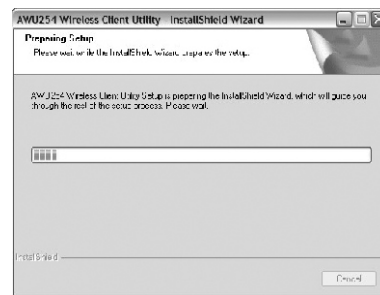


- 2.4GHz • 802.11g/b

The Quick Installation Guide will help you through the installation procedure for Windows 98/ME/2000/XP including basic hardware and software installation, as well as checking for wireless network availability. All the instructions below assume that there is an unencrypted wireless network. For detailed instructions on using Ad-hoc or advanced options, please refer to the User Guide on the Resource CD.

### A. Software Installation

1. Insert the Resource CD into your CD-ROM drive, Click the Start button and choose **Run**. In the field that appears, enter F:\XXX\Setup.exe (if "F" is the letter of your CD-ROM drive; XXX represents the setup program path, which is labeled on the Resource CD). Follow the InstallShield Wizard steps, and click the Finish button to finish the wizard.





**Note:** If Windows 2000 prompts "Digital Signature Not Found", click Yes to continue the installation. If Windows XP warns about Windows Logo testing, click Continue Anyway to continue the installation.

2. After installing the software, Please plug the adapter into your PC. If you need instructions as to how to do this, please refer to Section B. Hardware Installation. If you had plugged it into your PC already, please unplug it and plug it in again. The OS will automatically detect the adapter and setup the driver for the adapter. If it does not, please follow the Windows setup steps to finish the driver installation.

**Note:** You may be prompted to insert the Windows 98 CD-ROM, that's

because some components are needed, just follow the Window message to complete it.






If  (or ) appears in your system tray, congratulations! The installation of the AWU254 is completed..


### B. Hardware Installation

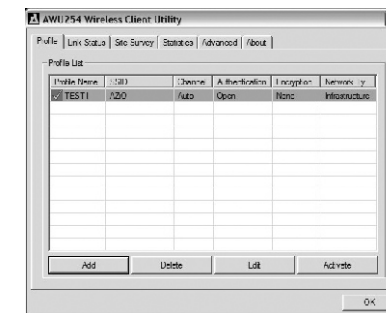
1. Connect one end of the USB cable to the AWU254.
2. Connect the other end of the USB cable to the USB port on your computer. The LED should light up when the adapter is plugged in and the PC is on.

### C. Check wireless connection for Windows 98/ME/2000

(Attention Windows XP user: Go directly to Step D.)

After installing the adapter, the adapter's tray icon  will appear in your system tray. If the icon is  (green), a wireless connection has been established. If the icon is  (gray), there is no connection. To establish a wireless connection, follow these steps below.

1. Double-click the icon  and the configuration screen of the utility will appear, you can also run the utility by clicking Start> Program> AZiO> AWU254> AWU254 Wireless Client Utility. On the prompted configuration tab page, click the Site Survey tab of the Utility.




- On the Site Survey screen that appears, click the Rescan button to refresh the list. Highlight an SSID and click the Connect button to connect an available network.

**Note:** If a well-balanced wireless network cannot be created, please refer to the User Guide on the Resource CD or your dealer for help.

## D. Check wireless connection for Windows XP

### a. Configure using AZIO AWU254 Utility

After Installing the adapter, the adapter's tray icon  will appear in your system tray. To use the AZIO Utility, double-click it. The steps for windows XP and windows 2000 are very similar. Please refer to **C. Check wireless connection for Windows 98/ME/2000.**

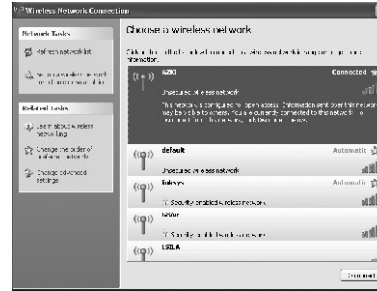
### b. Configure using Windows XP Wireless Zero Configuration

- Windows XP will display a wireless Network Connection message like this one. To use Windows XP Wireless Zero Configuration, double-click here.



- The screen that appears will show you many available wireless networks. Highlight the network that you want, and then click Connect.

**Note:** The steps below are the instructions and screenshots for Windows, if you have installed a Service Pack, it will not affect the setup. Windows menus are almost the same, and as such the following steps can still be consulted.



- The screen below will appear if the connection is finished.



**Note:** For more information about Windows XP Wireless Zero Configuration on a Windows XP computer, refer to Help and Support of the Operating System. If a well-balanced wireless network cannot be created, please refer to the User Guide on the Resource CD or your dealer for help.

## COPYRIGHT & TRADEMARKS

Specifications are subject to change without notice. **AZIO**® is a registered trademark of AZiO Corporation . Other brands and product names are trademarks or registered trademarks of their respective holders.

No part of the specifications may be reproduced in any form or by any means or used to make any derivative such as translation, transformation, or adaptation without permission from AZiO Corporation . Copyright © 2007 AZiO Corporation . All rights reserved.

## CONTACT INFORMATION

For help with the installation or operation of the AZIO AWU254, please contact us.

E-mail: [support@aziocorp.com](mailto:support@aziocorp.com)

Website: <http://www.aziocorp.com>