



**802.11n**

**Wireless USB Adapter**


---

MODEL: AWU212N



**User Manual**

## Copyright Statement

 is the registered trademark of AZiO Corporation. All the products and product names mentioned herein are the trademarks or registered trademarks of their respective holders. Copyright of the whole product as integration, including its accessories and software, belongs to AZiO Corporation. Without the permission of AZiO Corporation, any individual or party is not allowed to copy, plagiarize, imitate or translate into other languages.

All the photos and product specifications mentioned in this manual are for reference only. As upgrade of software and hardware progresses, there will be changes. And if there are changes, AZiO is not responsible for informing in advance. If you would like to know more about our product information, please visit our website at [www.aziocorp.com](http://www.aziocorp.com).

## Table of Content

<b>Chapter 1 Introduction.....</b>	<b>2</b>
1.1 Welcome.....	2
1.2 Product Feature.....	2
1.3 Content of Package.....	2
1.4 Before You Begin.....	3
<b>Chapter 2 Installation.....</b>	<b>4</b>
2.1 Software Installation.....	4
2.2 Hardware Installation.....	6
<b>Chapter 3 Configuration.....</b>	<b>7</b>
3.1 General.....	7
3.2 Profile.....	7
3.2.1 Add/Edit.....	7
3.2.2 Remove.....	9
3.3.3 Duplicate.....	9
3.3.4 Set Default.....	10
3.3 Available Network.....	10
3.4 Status.....	11
3.5 Statistics.....	12
3.6 WPS Setting.....	12
3.6.1 Pin Input Config (PIN).....	13
3.6.2 Push Button Config (PBC).....	15
<b>Chapter 4 Product Specifications.....</b>	<b>16</b>

# Chapter 1 Introduction

## 1.1 Welcome

Thank you for purchasing the AZiO AWU212N 802.11n wireless USB adapter. The AWU212N adapter connects you with IEEE802.11n networks at receiving rates of up to 300Mbps. By using reflection signals, 802.11n's "Multiple In, Multiple Out" (MIMO) technology increases range and reduces "dead spots" in the wireless coverage area.

WPS (Wi-Fi Protected Setup) simplifies the security setup process and management of Wi-Fi networks. The AWU212N also supports WMM for Multimedia Applications with Quality of Service in Wi-Fi Networks.

## 1.2 Product Feature

- Complies with IEEE 802.11n, IEEE 802.11g and IEEE 802.11b standards
- Supports USB 2.0 standards
- Provides 300Mbps receiving rate and 150Mbps sending rate
- Supports 20MHz/40MHz frequency width
- Auto-detects and changes the network transmission rate
- Provides two work modes: Infrastructure and Ad-Hoc
- Supports 64/128-bit WEP, WPA, WPA2 encryption methods and 802.1x security authentication standard
- WPS (Wi-Fi Protected Setup) simplifies security setup and management of Wi-Fi networks
- Supports WMM for Multimedia Applications with Quality of Service in Wi-Fi® Networks

## 1.3 Contents of Package

- One AWU212N
- One Installation CD w/User Manual
- One Quick Installation Guide

Contact your local authorized reseller or the store purchased from for any items damaged and/or missing.

## 1.4 Before You Begin

You must have the following:

- A laptop computer/desktop PC with an available USB 2.0 slot
- Minimum 300MHz processor and 32MB memory
- Windows 2000, XP\*, Vista\*, 7\* (\*32 or 64 bits)
- A CD-ROM Drive
- 802.11b/g/n Access Point (for infrastructure Mode) or another 802.11b/g/n wireless adapter (for Ad-Hoc; Peer-to-Peer networking mode)

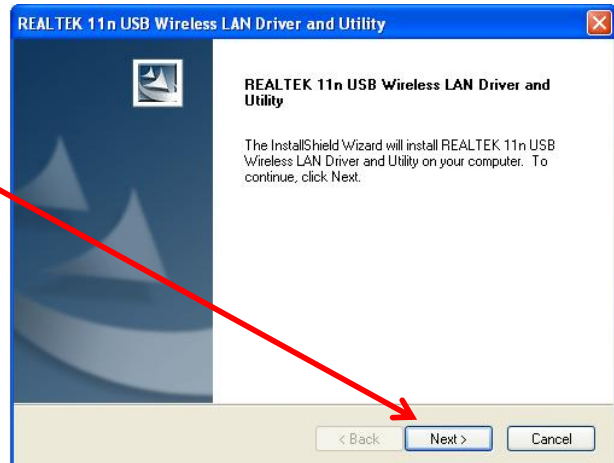
## Chapter 2 Installation

### 2.1 Software Installation

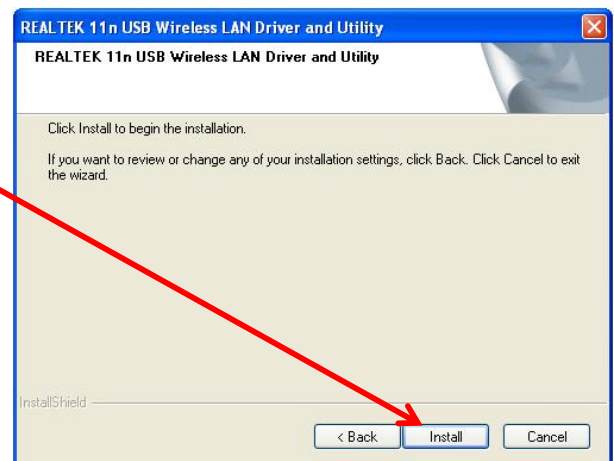
**NOTE:** Snap-shot screens of the following installation procedure are based on Windows XP. Installation procedures are similar for other windows operating systems.

1. Insert Installation CD to your CD-ROM drive. Browse the CD and double-click **setup.exe** in Driver folder to execute it. The wizard will run and install all necessary files to your computer automatically.

2. Click **Next** to continue after selecting setup language.



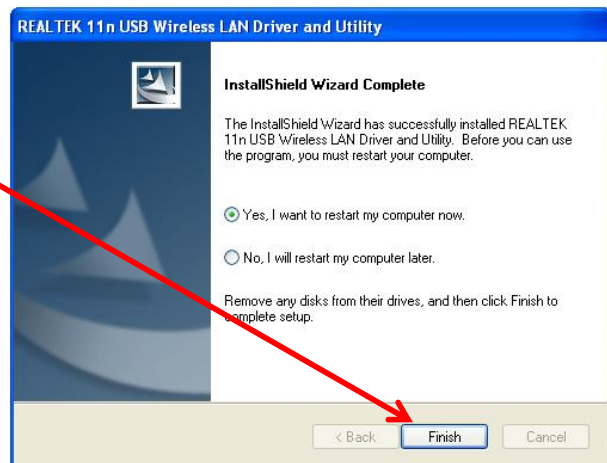
3. Click **Install** to start the installation.



4. During the installation, the following dialogue may appear. Click **Continue Anyway** to continue.




5. Click **Finish** to complete the software installation.



Now your computer will restart automatically.

## 2.2 Hardware Installation

### LED Indicator:

	Status	Description
	ON	Indicates a valid connection
	Flashing	Indicates transferring or receiving data

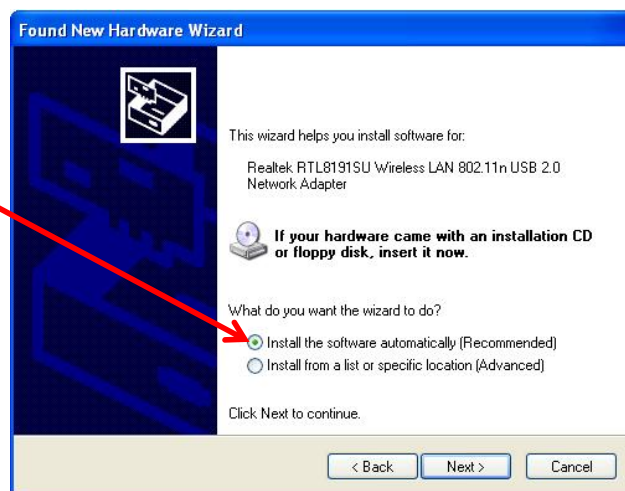
### Installation:

1. Power on your PC. Let the operating system boot up completely and log in as necessary.

2. Insert AWU212N into a USB slot of your computer.



3. Select ***install the software automatically (Recommended)*** when **Found New Hardware** window appears.



The software and hardware installation for AWU212N is now complete.

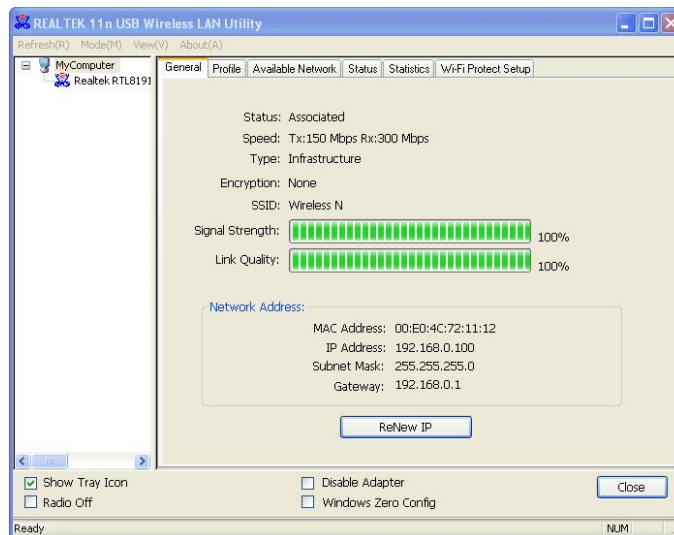
## Chapter 3 Configuration

There are two ways to run REALTEK 11n USB Wireless LAN Utility as follows:

1. Click **Start** → **Programs** → **REALTEK 11n USB Wireless LAN Utility** → **REALTEK 11n USB Wireless LAN Utility** to run the utility. Or...
2. Double click **REALTEK 11n USB Wireless LAN Utility** icon  to run the utility.

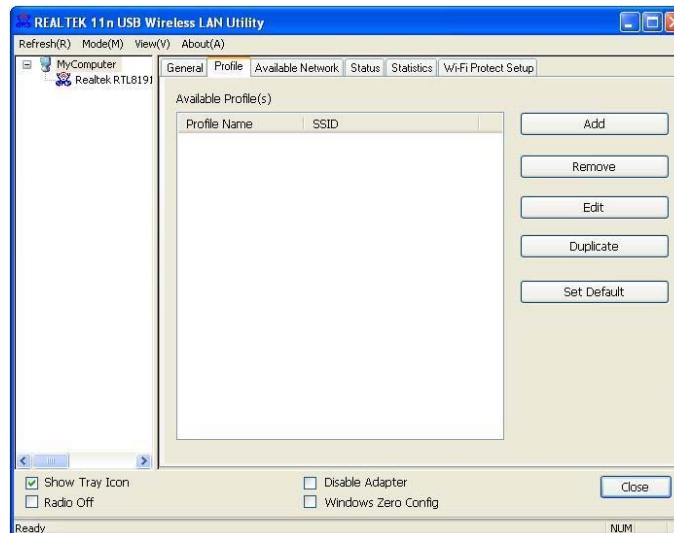
### 3.1 General

The *General* tab shows detail information about the current connection.

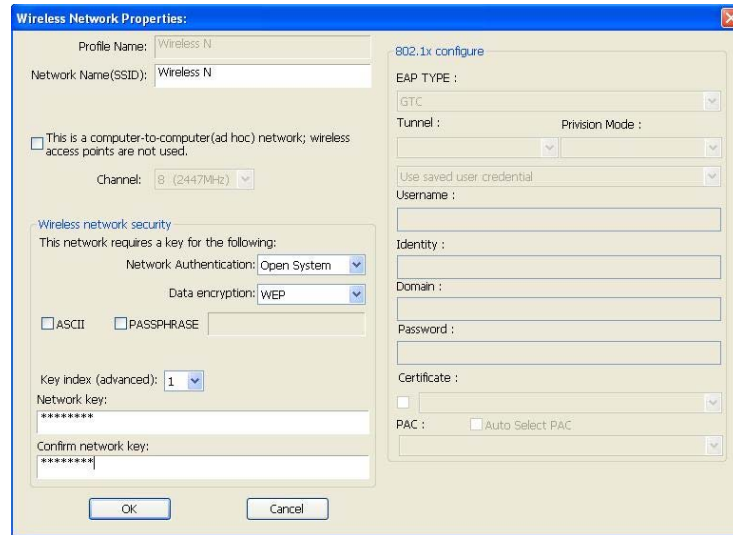


### 3.2 Profile

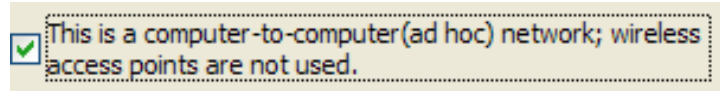
Profiles can keep your favorite wireless setting among your home, office, and other public hotspot. You may save multiple profiles and activate the one of your preference.



### 3.2.1 Add/Edit



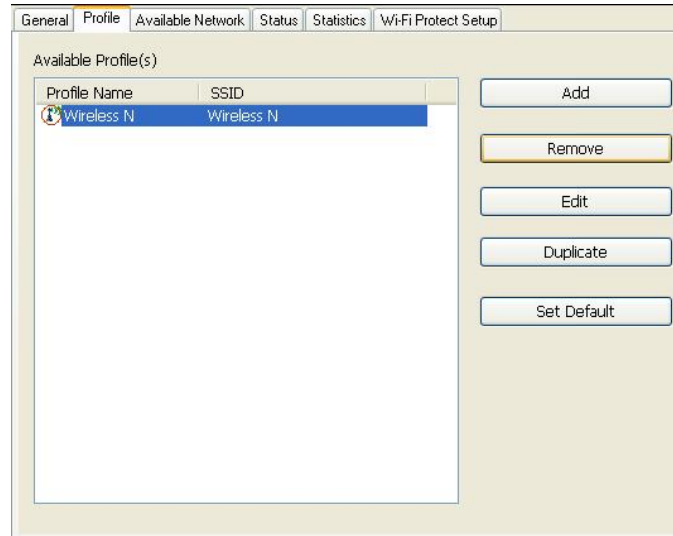
- **Profile Name:** Specify a name for the profile
- **SSID:** Name of intended wireless network.
- **Network Type:**
  - **Infrastructure:** A wireless Router and/or Access Point is required.
  - **Ad-hoc:** Peer-to-Peer network, no base station required.  
Check the checkbox to activate Ad-hoc mode.



- **Channel:** Channel of the connected wireless network.
- **Authentication:** Select from Open System, Shared Key, WPA-PSK, WPA2-PSK, WPA 802.1x, WPA2 802.1x, WEP 802.1x, WPA CCKM and WPA2 CCKM.
- **Encryption:** Select from WEP, TKIP, AES, and Disable

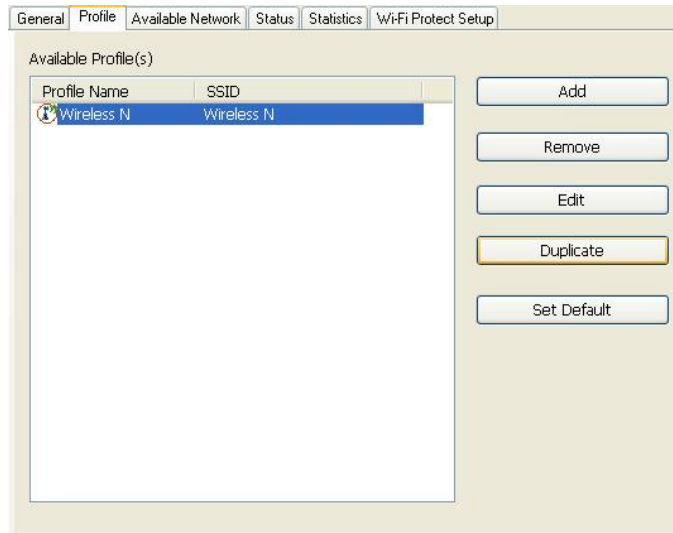
### 3.2.2 Remove

Select a profile and click **Remove** button to delete.

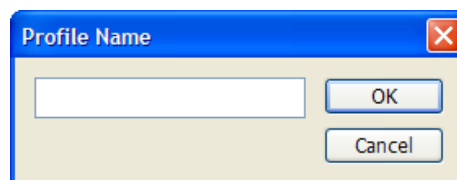


### 3.2.3 Duplicate

Select a profile which you want to copy and then click **Duplicate**.

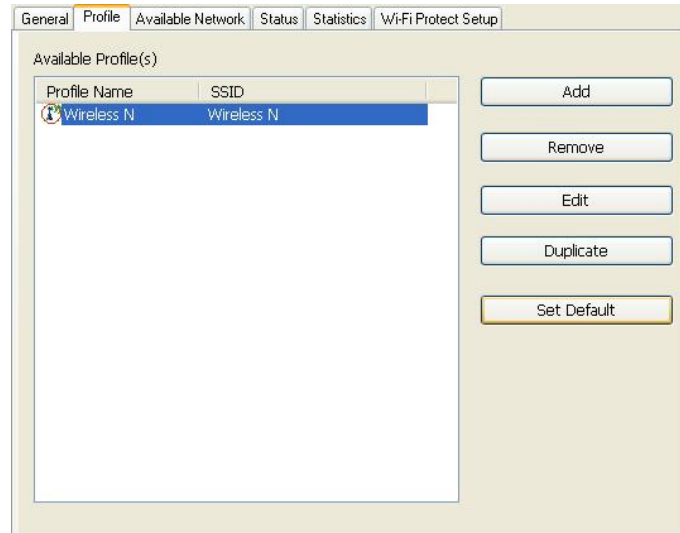


Input the new profile name when **Profile Name** window appears.



### 3.2.4 Set Default

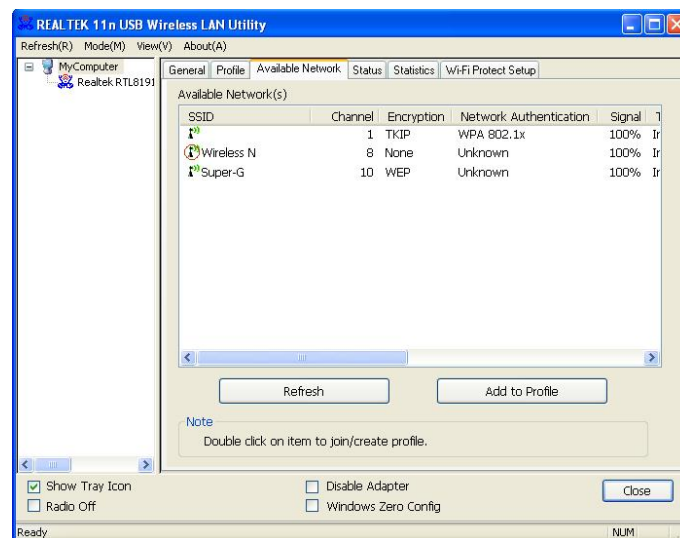
Select a profile and click the **Set Default** button to make it the default profile for automatic connection.



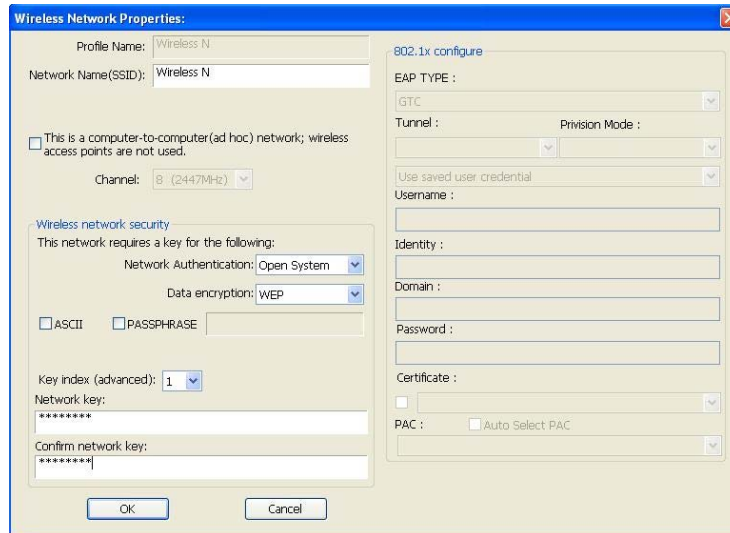
### 3.3 Available Network

Under Available Network tab, the information from all surrounding wireless networks from the last scan will be displayed.

Click **Refresh** to update and refresh.



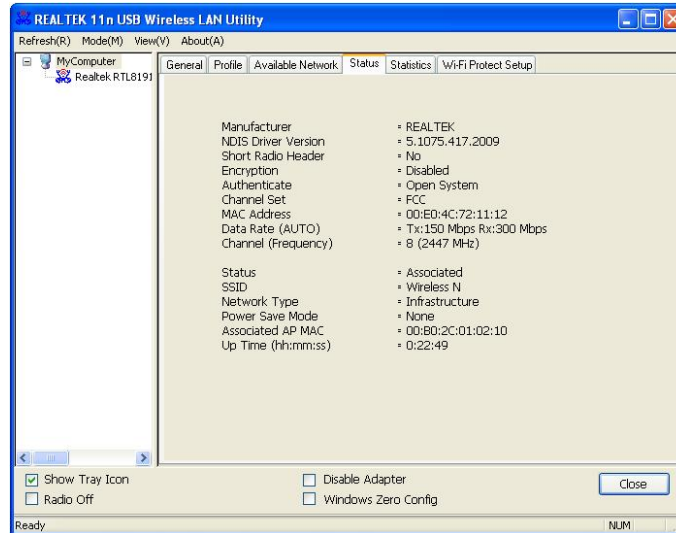
Double-click the network you want to connect.



Modify the profile information as needed.

### 3.4 Status

The *Status* tab displays the detailed information of the current connection.





### 3.6.1 Pin Input Config (PIN)

1. Input AWU212N's PIN Code into AP and click **Start PIN** on the AP-Router WPS config page

*Note: AP operating page may vary but similar from different brands.*

#### Wi-Fi Protected Setup

This page allows you to change the setting for WPS (Wi-Fi Protected Setup). Using this feature could let your wireless client automatically synchronize its setting and connect to the Access Point in a minute without any hassle.

Disable WPS

WPS Status:  Configured  UnConfigured

Self-PIN Number: 68906818  
 Push Button Configuration:

---

Client PIN Number:

2. Click **Pin Input Config (PIN)** under AWU212N **Wi-Fi Protect Setup** tab

Pin Input Config (PIN)  
 After pushing the PIN button, Please enter the PIN code into your AP.

**PIN Code : 54286672**

3. Select one **WPS AP** you want to connect and click **Select**.

Wi-Fi Protected Setup - Select AP

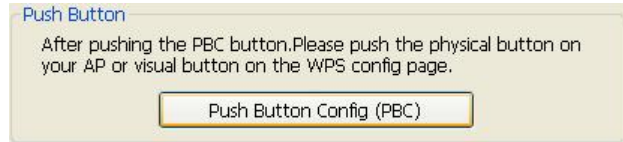
WPS AP Name	WPS AP MAC
Wireless N	00:B0:2C:01:02:10

4. Wait until ***PIN method*** window appears, the secure connection between AP and AWU212N will be established automatically.



### 3.6.2 Push Button Config (PBC)

1. Click **Push Button Config (PBC)** under AWU212N **Wi-Fi Protected Setup** tab.



2. Click **Start PBC** on the AP-Router WPS config page or push the **WPS button** on your AP.

**Note:** AP operating page may vary but similar from different brands.

#### Wi-Fi Protected Setup

This page allows you to change the setting for WPS (Wi-Fi Protected Setup). Using this feature could let your wireless client automatically synchronize its setting and connect to the Access Point in a minute without any hassle.

Disable WPS

WPS Status:  Configured  UnConfigured

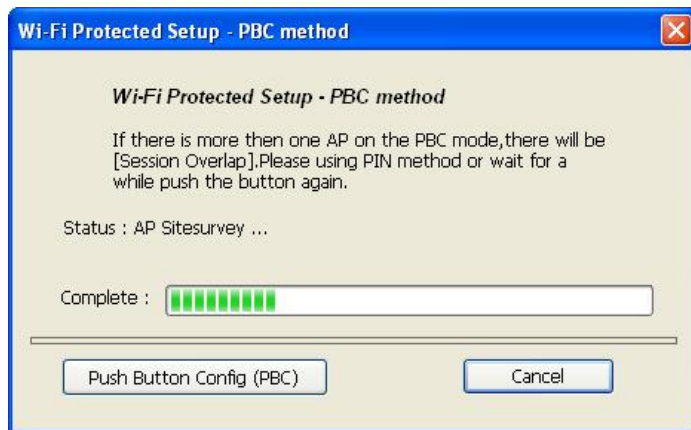
Self-PIN Number: 68906818

Push Button Configuration:

---

Client PIN Number:

3. Wait until **PBC method** window appear, the secure connection between AP and AWU212N will be established automatically.



**Note:**

If there is more than one AP on PBC mode, there will be session overlap. Please use PIN Input Config (PIN) or wait for awhile and push the button again.

## Chapter 4 Product Specifications

### Specifications:

Chipset	Realtek RTL8191SU	
Standards	IEEE 802.11n, IEEE 802.11g, IEEE 802.11b	
Interface	USB 2.0	
OS	Windows 2000/ XP*/ Vista*/ 7* (*32 or 64 bits)	
Frequency Range	2.412GHz~2.4835GHz	
Modulation Method	CCK , OFDM	
speed	11b	11 Mbps/9 Mbps/6 Mbps/5.5 Mbps/2 Mbps/ 1 Mbps
	11g	54 Mbps/48 Mbps/36 Mbps /24 Mbps/ 18 Mbps/12 Mbps/11 Mbps/9 Mbps/6 Mbps
	11n	300Mbps ~ 270Mbps
Output Power	11b	18dBm
	11g	15dBm
	11n	13dBm
Security	64/128-bit WEP, WPA/WPA2, 802.1x	
Antenna type	printed antenna	
Channels	11 Channels (USA, Canada) 13 Channels (Europe) 14 Channels (Japan)	
Transmit distance	Indoors : up to 300 feet Outdoors : up to 600 feet	
Operating Temperature	0°C ~ 50°C	
Storage Temperature	-40°C~70°C	
Operating Humidity	10%~ 90% RH Non-condensing	
Storage Humidity	5% ~ 90% RH Non-condensing	
LED	Link/Activity	
Dimension(L x W x H)	60mm x 24mm x 8.5mm	
Weight	7.7g	

## **Service & Warranty**

### **Service**

If you need assistance with the product, please visit our website at [www.aziocorp.com](http://www.aziocorp.com) for frequently asked questions and troubleshooting tips. Otherwise, please contact our dedicated customer care team.

There are several ways to reach us:

By Phone: (866) 468-1198

By eMail: [support@aziocorp.com](mailto:support@aziocorp.com)

On Live Help: <http://www.aziocorp.com/support/helpdesk.htm>

### **Warranty**

#### Limited 1 Year Warranty

AZiO Corporation warrants this product against defect in material or workmanship for 1 year from the date of purchase. If this product proves to be defective, contact AZiO Corporation's customer care for repair or replacement of your unit. Return requests cannot be process without the proof of original date of purchase. This warranty applies only to the original purchase of the product and is not transferable. This warranty does not cover any incompatibilities due to the user's computer, hardware, software or related system configuration in which the product interfaces. The warranty does not cover any damage caused by negligence, abuse, or non-authorized modifications. To the maximum extent permitted by applicable law, in no event shall AZiO Corporation, its affiliates, or its dealers be liable for any special, incidental, indirect or consequential damages whatsoever regardless of cause or form of action.