



802.11n
Wireless USB Adapter

Model: AWU101N



User Manual

Copyright Statement



AZiO[®] is the registered trademark of AZiO Corporation. All the products and product names mentioned herein are the trademarks or registered trademarks of their respective holders. Copyright of the whole product as integration, including its accessories and software, belongs to AZiO Corporation. Without the permission of AZiO Corporation, any individual or party is not allowed to copy, plagiarize, imitate or translate it into other languages.

All the photos and product specifications mentioned in this manual are for references only. As the upgrade of software and hardware progresses, there will be changes. And if there are changes, AZiO is not responsible for informing in advance. If you would like to know more about our product information, please visit our website at www.aziocorp.com.

Table of Content

| | |
|--|-----------|
| Chapter 1. Introduction..... | 2 |
| 1.1 Welcome..... | 2 |
| 1.2 Product Feature..... | 2 |
| 1.3 Package Contents..... | 2 |
| Chapter 2. Installation..... | 3 |
| Chapter 3. Configuration..... | 6 |
| 3.1 Station Mode..... | 6 |
| 3.1.1 Link Status..... | 7 |
| 3.1.2 Site Survey..... | 7 |
| 3.1.3 Profile..... | 8 |
| 3.1.3.1 Add/Edit Profile..... | 9 |
| 3.1.4 Statistics..... | 10 |
| 3.1.5 WPS Setting..... | 11 |
| 3.2 AP Mode..... | 12 |
| 3.2.1 Basic Setting..... | 12 |
| 3.2.2 Security Setting..... | 13 |
| 3.2.3 Access Control..... | 14 |
| 3.2.4 About..... | 14 |
| Chapter 4. How to connect with PSP..... | 15 |
| 4.1 Configure PSP with Ad-Hoc mode..... | 15 |
| 4.2 Configure XLink Kai..... | 17 |
| Chapter 5. Product Specifications..... | 18 |

Chapter 1 Introduction

1.1 Welcome

Thank you for purchasing the AZiO AWU101N 802.11n wireless USB adapter. AWU101N connects you with IEEE802.11n (Draft 2.0) networks at transmission rates of up to 150Mbps. By using reflection signals, 802.11n's "Multiple In, Multiple Out" (MIMO) technology increases range and reduces "dead spots" in the wireless coverage area.

The Soft AP supported by AWU101N can help you establish wireless LAN networking at the lowest cost. WPS, Wi-Fi Protected Setup, simplifies security setup and management of Wi-Fi networks. This adapter supports WMM for Multimedia Applications with Quality of Service in Wi-Fi® Networks. PS3, PSP, Nintendo DS, and Wii owners can enjoy playing LAN-enabled / system-link games through the internet by downloading XLink Kai global gaming network software at <http://www.teamxlink.co.uk/>.

1.2 Product Feature

- Complies with IEEE 802.11n (Draft 2.0), IEEE 802.11g and IEEE 802.11b standards
- Provides 150Mbps receiving rate and 150Mbps sending rate
- Supports 20MHz/40MHz frequency width
- Auto-detects and changes the network transmission rate
- Provides two work modes: Infrastructure and Ad-Hoc
- Supports Soft AP to establish your wireless LAN networking
- Supports XLink Kai software for PS3, PSP, Wii and Nintendo DS system-link / LAN-enabled gaming through the internet.
- Supports 64/128-bit WEP, WPA, WPA2 encryption methods and 802.1x security authentication standard
- WPS (Wi-Fi Protected Setup) simplify the security setup and management of Wi-Fi networks.
- Supports WMM for Multimedia Applications with Quality of Service in Wi-Fi® Networks

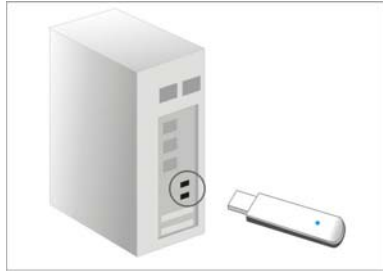
1.3 Package Contents

- One AWU101N USB Adapter
- One Installation CD w/ User Manual
- One Quick Installation Guide

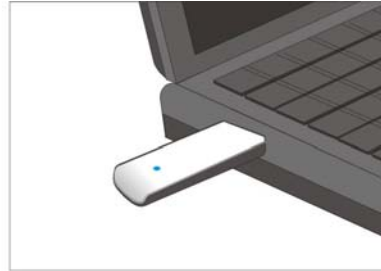
Chapter 2 Installation

NOTE: Snap-shot screens of the following installation procedure are based on Windows XP. Installation procedures will be similar for other windows operating systems.

1. Insert AWU101N into a USB slot of your computer.



Or

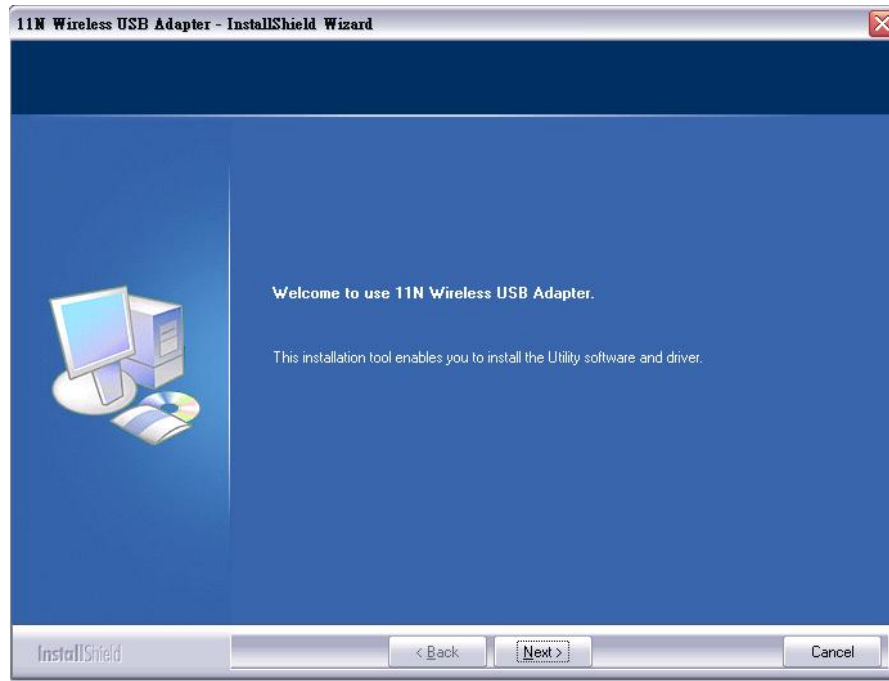


2. Select **Cancel** when “Found New Hardware” window appears.

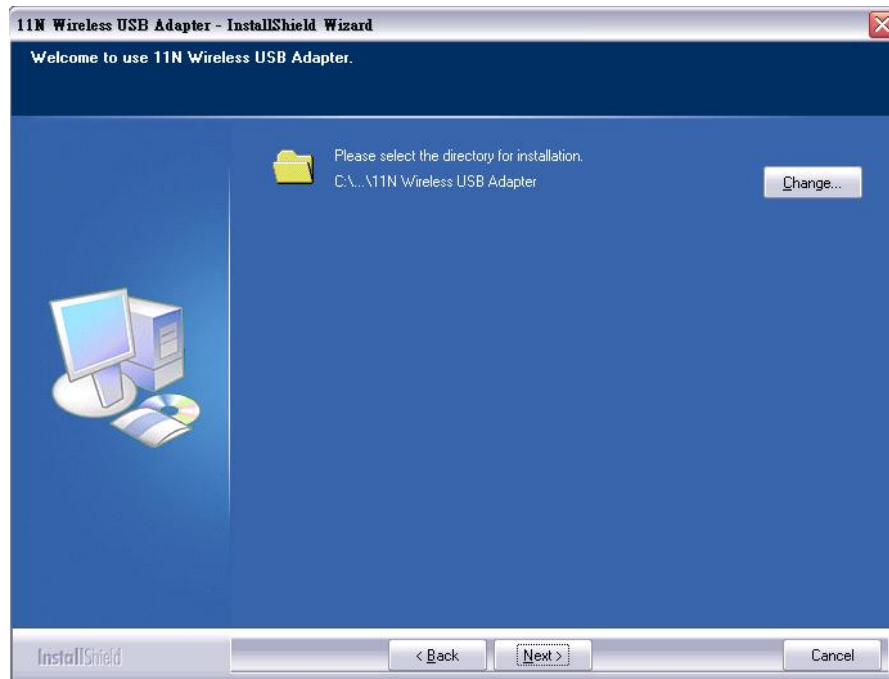


3. Insert Installation CD to your CD-ROM drive. Browse CD and double-click **setup.exe** in Driver folder to execute it. The wizard will run and install all necessary files to your computer automatically.

4. Click **Next** to start installation.



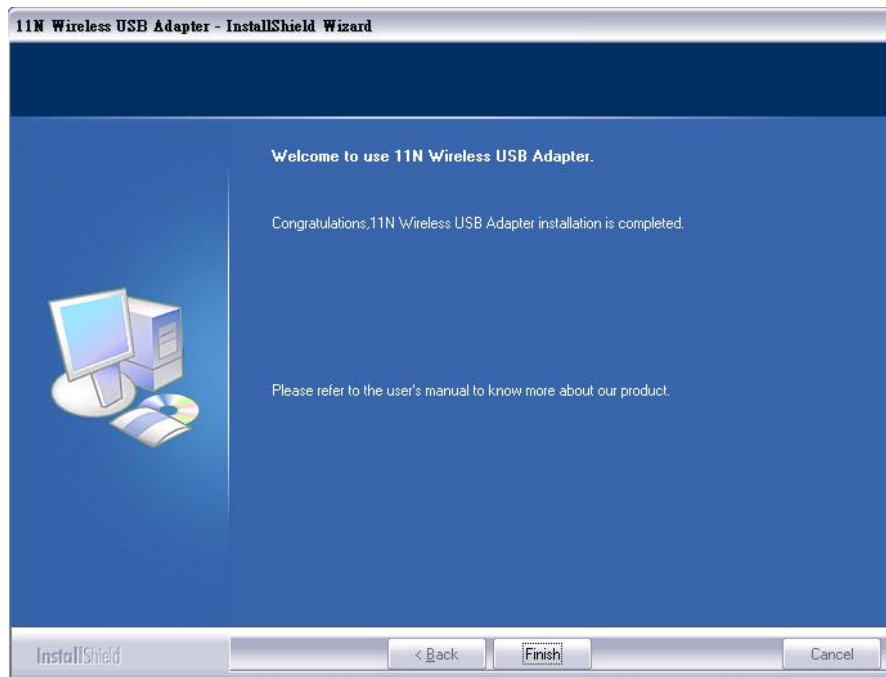
5. Click **Change...** to select the path, or click **Next** to continue.




6. During the installation, the following dialogue may appear. Click **Continue Anyway** to continue.




7. Click **Finish** to complete the software installation.



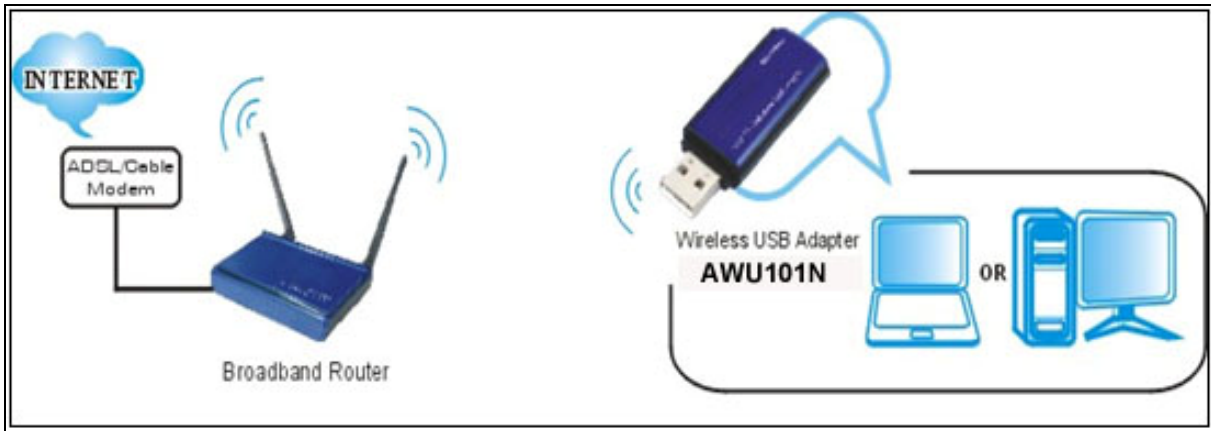
You will see a tray icon  appear in your system tray at the bottom of the screen after the software and hardware installation is completed successfully.

Chapter 3 Configuration

Double-click the tray icon  to launch the configuration utility.

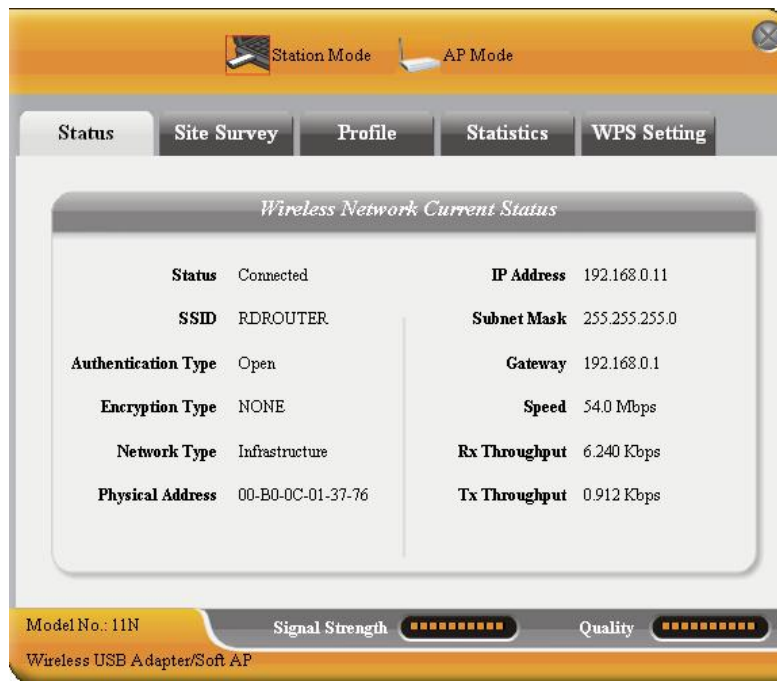
3.1 Station Mode

Station Mode is the default access mode for AWU101N. In this mode, AWU101N serves as a client to receive wireless signals to access the Internet.



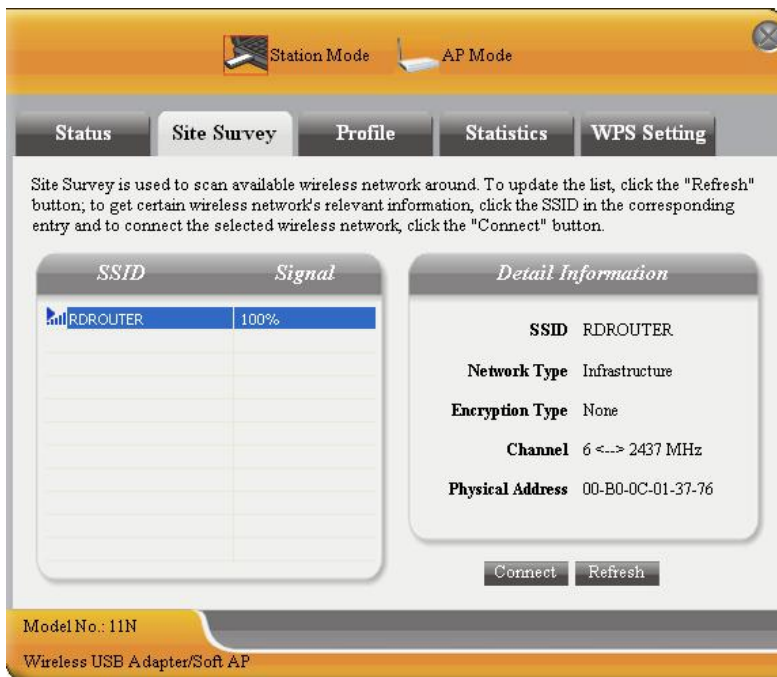
3.1.1 Status

Status tab shows detail information about the current connection.



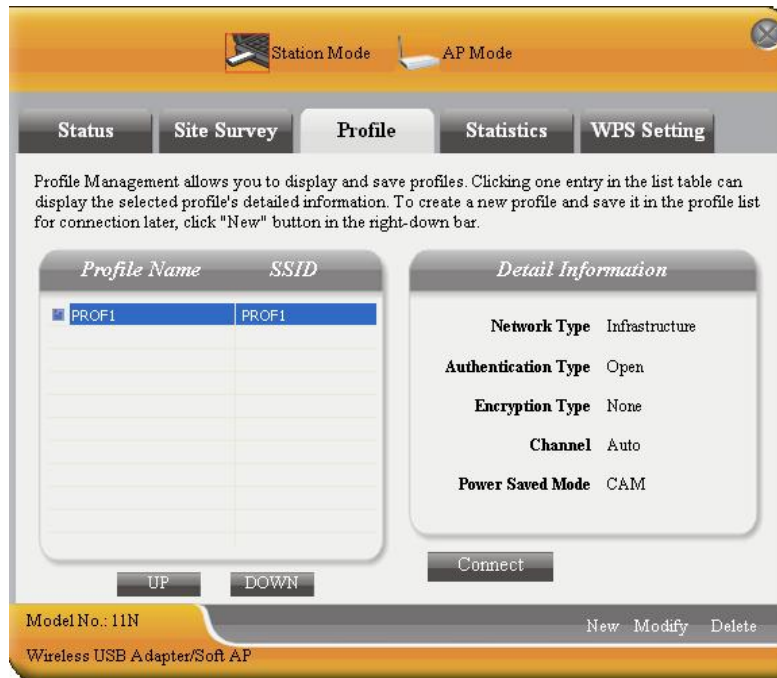
3.1.2 Site Survey

The Site Survey tab provides information of all surrounding wireless networks from the last scan. Click **Refresh** to update and refresh.



3.1.3 Profile

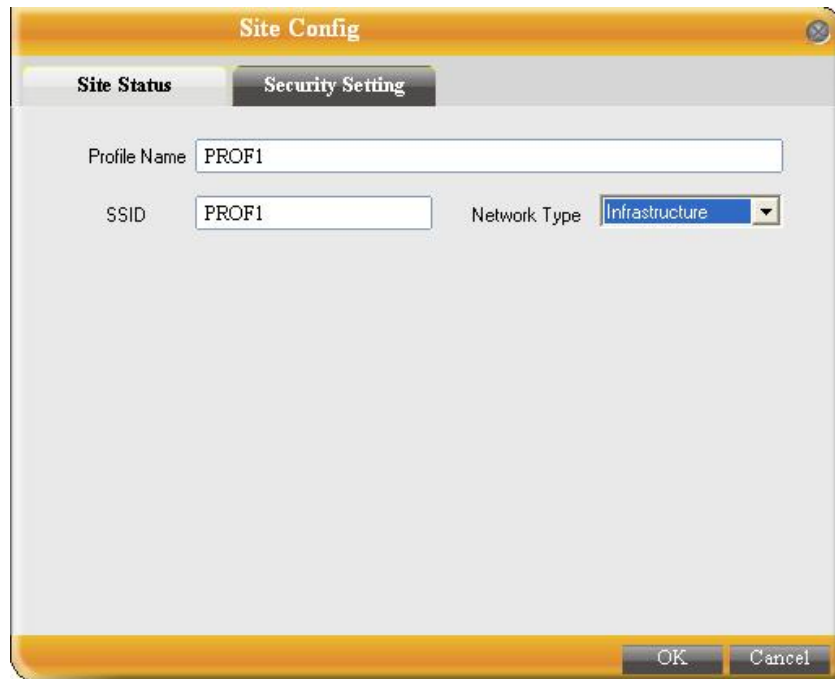
Profile can keep your favorite wireless settings among your home, office, and other public hotspot. You can save multiple profiles and activate the choice of your preference.



- **Connect:** to make an existing profile active and establish connection
- **New:** to create a new profile
- **Modify:** to edit/modify/change parameter of an existing profile
- **Delete:** to delete an existing profile

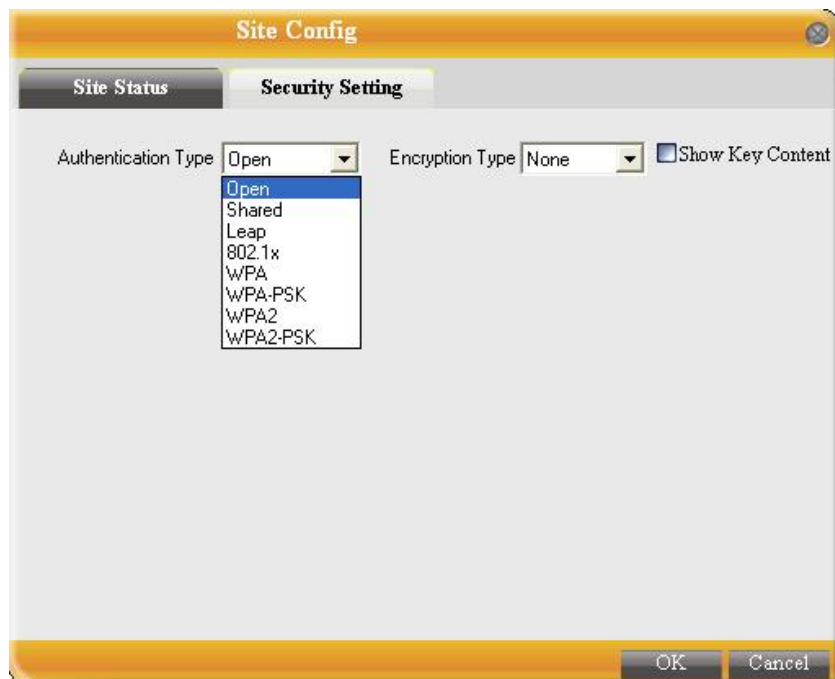
3.1.3.1 Add/Edit Profile

a. Site Status



The image shows a dialog box titled "Site Config" with two tabs: "Site Status" and "Security Setting". The "Site Status" tab is active. It contains three input fields: "Profile Name" with the value "PROF1", "SSID" with the value "PROF1", and "Network Type" with a dropdown menu set to "Infrastructure". At the bottom right, there are "OK" and "Cancel" buttons.

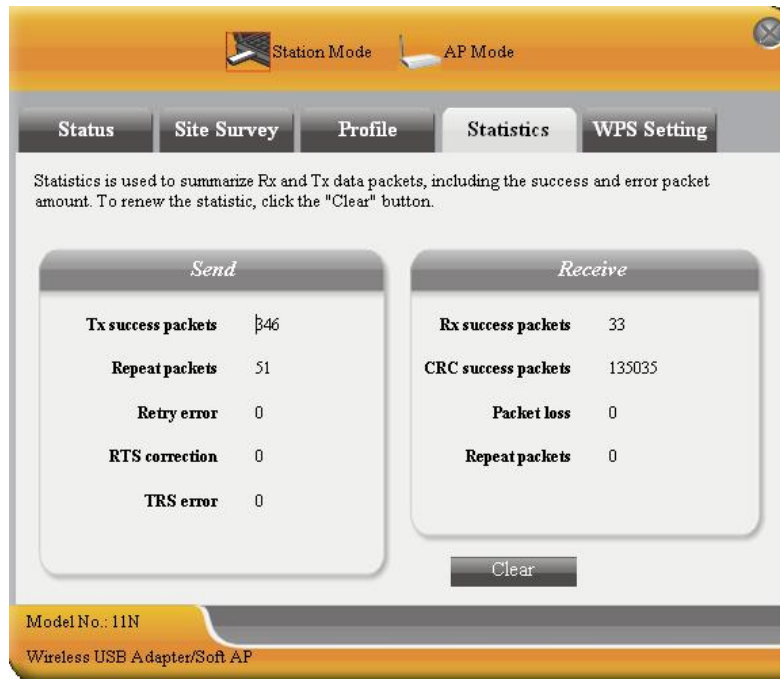
b. Security Setting



The image shows the same "Site Config" dialog box, but with the "Security Setting" tab active. It contains three input fields: "Authentication Type" with a dropdown menu showing a list of options (Open, Shared, Leap, 802.1x, WPA, WPA-PSK, WPA2, WPA2-PSK), "Encryption Type" with a dropdown menu set to "None", and a checkbox labeled "Show Key Content" which is currently unchecked. At the bottom right, there are "OK" and "Cancel" buttons.

3.1.4 Statistics

The Statistics tab displays the detail counter information based on 802.11 MIB counters. This page translates that MIB counters into a format easier for users to understand.

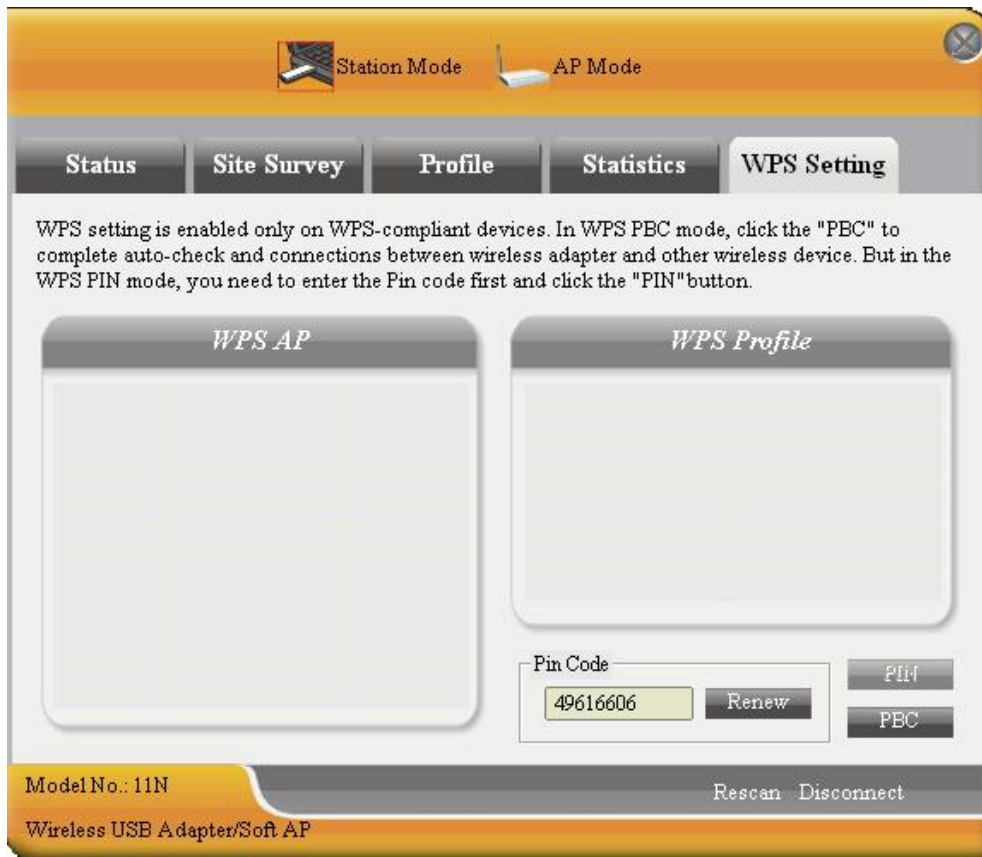


- **Clear:** to renew the statistics.

3.1.5 WPS Setting

The WPS Setting tab supports the configuration setup using PIN configuration method or PBC configuration method.

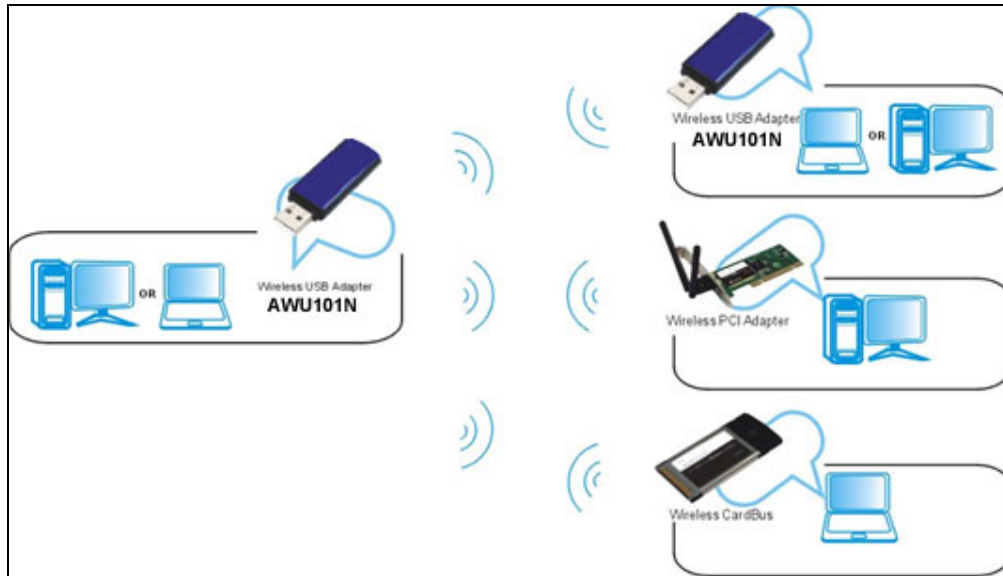
WPS (Wi-Fi Protected Setup) simplifies the security setup and management of Wi-Fi networks.



- **PIN:** Enter the Pin code and click **PIN** to automatically connect AWU101N with wireless devices in the area.
- **PBC:** Click **PBC** to complete auto-check and connections between AWU101N and other wireless devices.
- **Renew:** Click to update the Pin code.
- **Rescan:** Updates information on surrounding wireless network.
- **Connect:** Click to connect the WPS wireless network.
- **Disconnect:** Disconnects the connected wireless network.

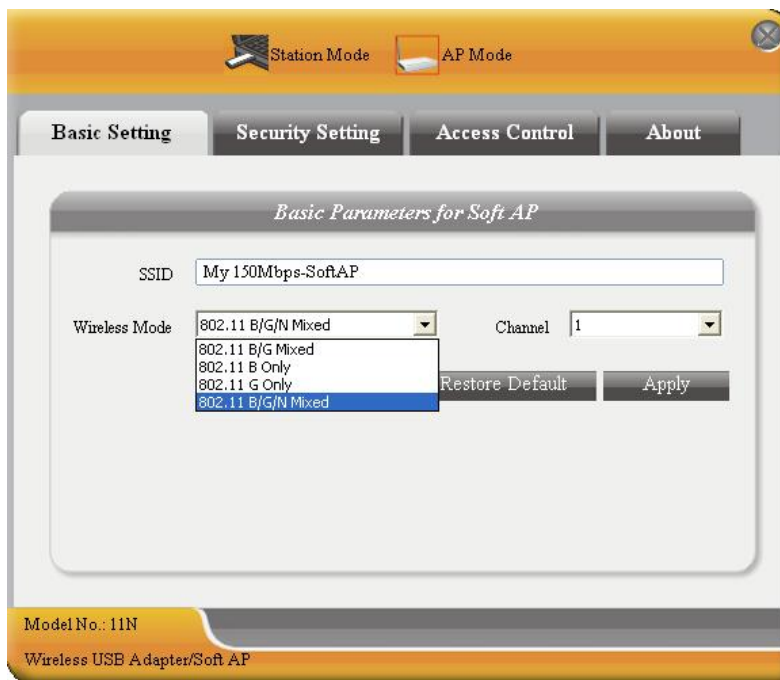
3.2 AP Mode

The device also can serve as an access point to transmit wireless signals and create wireless network, allowing other wireless clients to access the network.



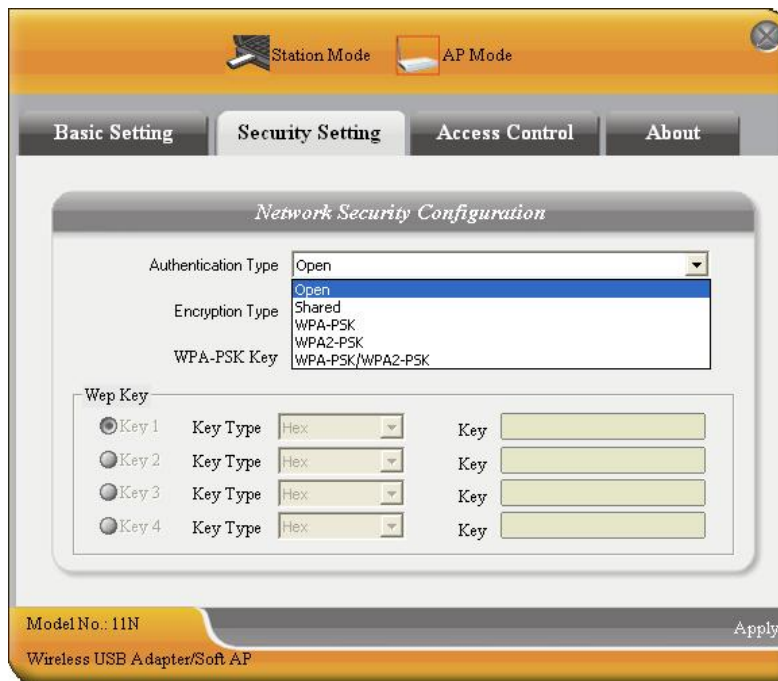
3.2.1 Basic Setting

Basic Setting tab configure the AP's basic parameters, including SSID, Wireless Mode and Channel.



3.2.2 Security Setting

Use Security Setting tab to setup different security configurations of wireless communication and select the authentication or encryption type.

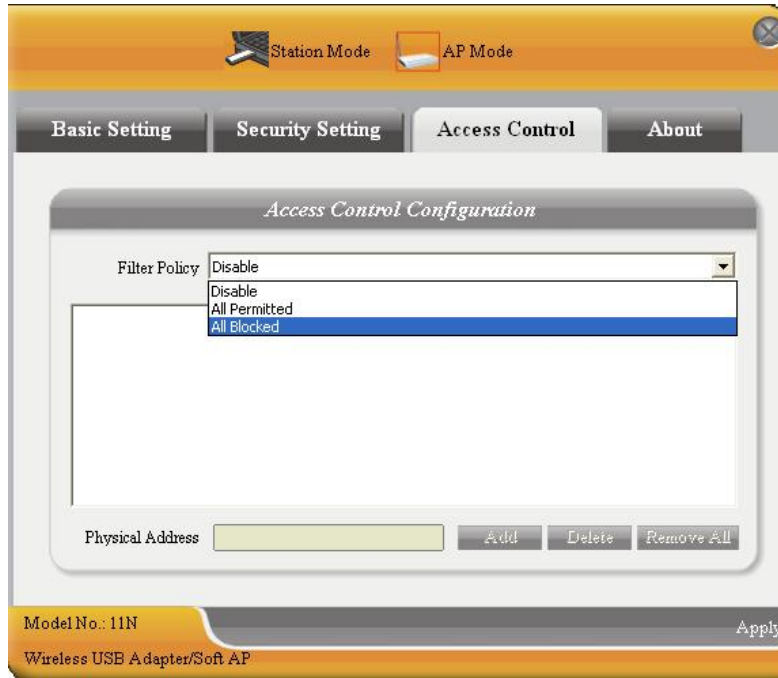


Note:

1. Hex characters include numbers 0~9 and letters a~f.
2. ASCII characters include any numbers/letters and characters.

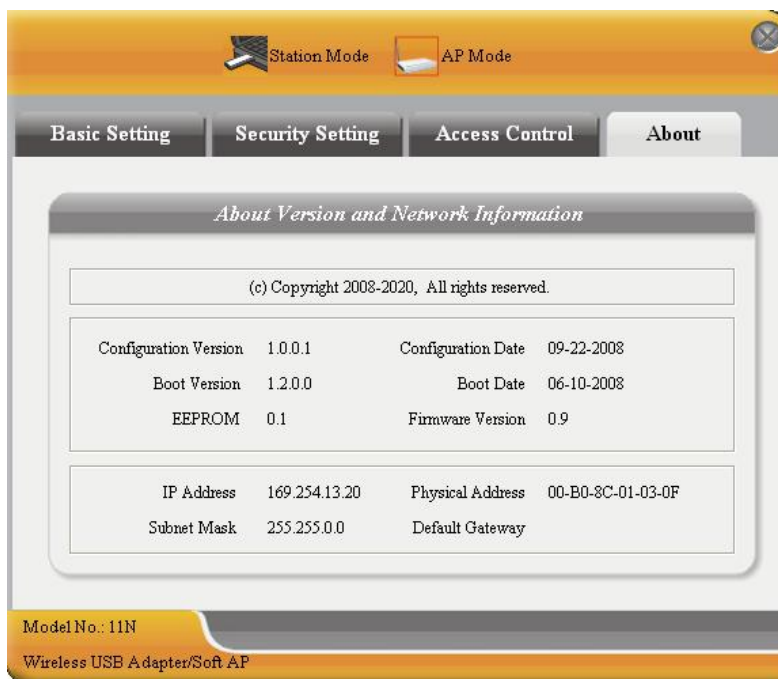
3.2.3 Access Control

Choose Access Control tab to start MAC filter control. Access Control includes **All Permitted** and **All Blocked**. After editing the MAC address access list, only the MAC in the Allow All list will be able to access AWU101N.



3.2.4 About

About tab displays the information about AWU101N.



Chapter 4 How to connect with PSP



4.1 Configure PSP with Ad-Hoc mode

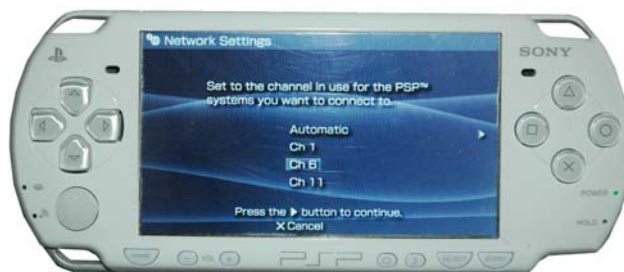
- Select Network Settings on PSP



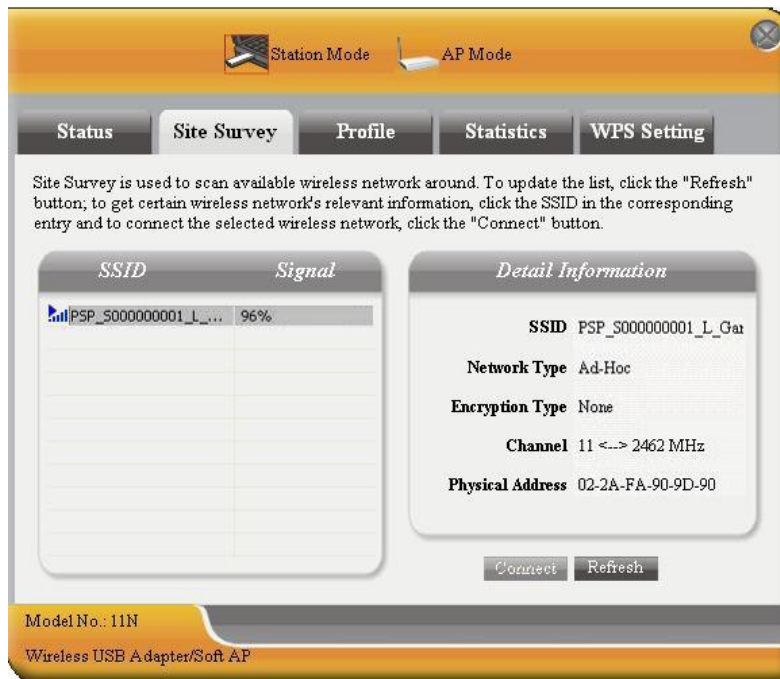
- Select Ad-Hoc mode on PSP



- Select Channel on PSP



d. Scan PSP in AWU101N Utility Interface and click **Connect** to connect the wireless network.

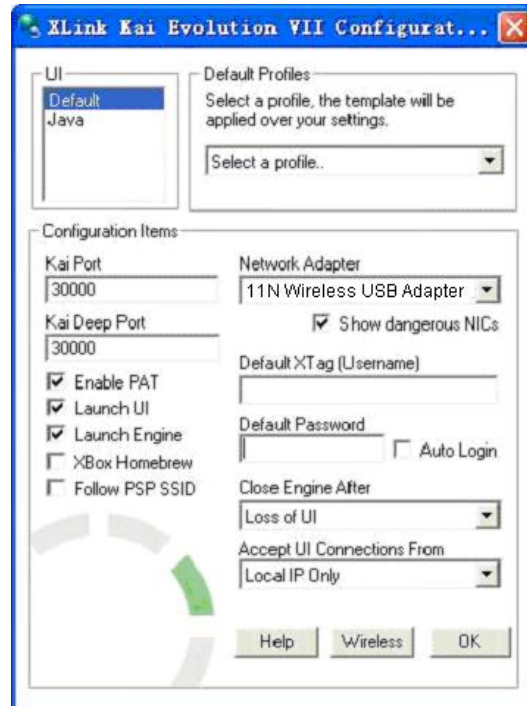


e. In Site Survey check **enable PSP connection mode** checkbox.



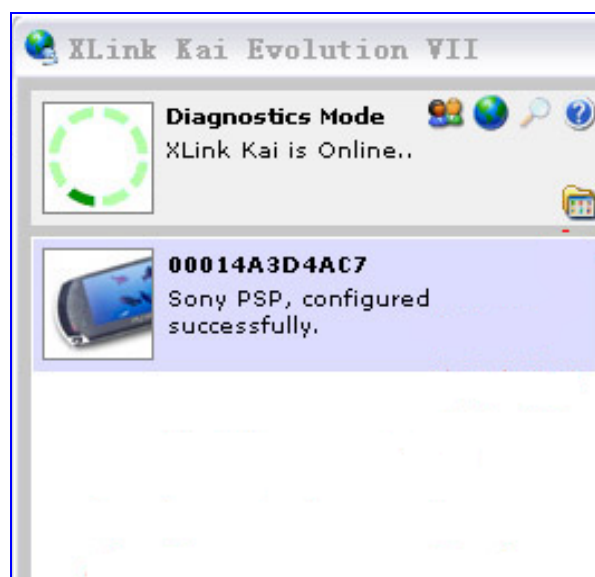
4.2 Configure XLink Kai

After installing, select **Start** → **All programs** → **XLink Kai Evolution VII** → **Start Kai Config** to configure the user name, password and other parameters.



Login XLink Kai

Select **Start** → **All programs** → **XLink Kai Evolution VII** → **Start Kai**. PSP will connect with XLink Kai automatically. The following window indicates the connection is established successfully.



Chapter 5 Product Specifications

Specifications:

| | | |
|---------------------------|--|--|
| Standards | IEEE 802.11n(Draft 2.0), IEEE 802.11g, IEEE 802.11b | |
| Interface | USB 2.0 | |
| OS | Windows 2000/ XP/ Vista/ 7 | |
| Frequency Range | 2.412GHz~2.484GHz | |
| Maximum Output Power | 18dbm | |
| Input Voltage Range (VAC) | 5V | |
| Output Voltage Range(VDC) | 1.5V/3.3V | |
| Max. Consumption | 0.6W | |
| Antenna type | Printed antenna | |
| Channels: | 11 Channels (USA, Canada) 13 Channels (Europe) 14 Channels (Japan) | |
| Operating Temperature | 0°C ~ 40°C | |
| Storage Temperature | -40°C~70°C | |
| Operating Humidity | 10%~ 90% RH Non-condensing | |
| Storage Humidity | 5% ~ 90% RH Non-condensing | |
| Dimension(L x W x H) | 62.5 x 19 x 7.9 mm | |
| Weight | 9.2g | |
| speed | 11b | 11 Mbps/5.5 Mbps/2 Mbps/1 Mbps |
| | 11g | 54 Mbps/48 Mbps/36 Mbps /24 Mbps/18 Mbps/ 12 Mbps/9 Mbps/6 Mbps |
| | 11n | 40MHz: 130Mbps/117Mbps/104Mbp/78Mbp/52Mbp/ 39Mbp/26Mbp/13Mbp 20MHz: 65Mbp/58.5Mbp/52Mbp/39Mbp/26Mbp/ 19.5Mbp/13Mbp/6.5Mbp |

Service & Warranty

Service

If you need assistance with the product, please visit our website at www.aziocorp.com for frequently asked questions and troubleshooting tips. Otherwise, please contact our dedicated customer care team.

There are several ways to contact us:

By Phone: (909) 468-1198

By eMail: support@aziocorp.com

On LiveChat: www.aziocorp.com

Warranty

Limited 1 Year Warranty

AZiO Corporation warrants this product against defect in material or workmanship for 1 year from the date of purchase. If this product proves to be defective, contact AZiO Corporation's customer care for repair or replacement of your unit. Return requests cannot be process without the proof of original date of purchase. This warranty applies only to the original purchase of the product and is not transferable. This warranty does not cover any incompatibilities due to the user's computer, hardware, software or related system configuration in which the product interfaces. The warranty does not cover any damage caused by negligence, abuse, or non-authorized modifications. To the maximum extent permitted by applicable law, in no event shall AZiO Corporation, its affiliates, or its dealers be liable for any special, incidental, indirect or consequential damages whatsoever regardless of cause or form of action.