

USER MANUAL

SATA HDD Docking

Model : ADP-SU33

SATA to USB2.0 and eSATA / One Touch Backup



FCC COMPLIANCE STATEMENTS

This equipment has been tested and found to comply with the limits for a Class B digital device, pursuant to Part 15 of the FCC Rules. These limits are designed to provide reasonable protection against harmful interference in a residential installation. This equipment generates, uses and can radiate radio frequency energy and, if not installed and used in accordance with the instructions, there is no guarantee that interference will not occur in a particular installation. If this equipment does cause harmful interference to equipment off and on, the user is encouraged to try to correct the interference by one or more of the following measures:

Reorient or relocate the receiving antenna.

Increase the Distance between the equipment and receiver.

Connect the equipment into an outlet on a circuit different from that to which the receiver is connected.

Consult the dealer or an experienced radio/TV technician for help.

TRADEMARKS

MS-DOS, Windows, Windows 98/NT/2000/ME/XP/Vista are trademarks of Microsoft Corporation.

Macintosh and Mac are trademarks of Apple Computer

◆ All of the third-party brands and names are the property of their respective owners.

CONTENTS

1. Introduction	5
2. Main Features	5
3. Product Overview	5
3.1 Product Components	5
3.2 Minimum System Requirements	6
3.3 Take a look to ADP-SU33	7
3.4 Start to Assemble	8
4. Using the Docking	9
4.1 Using in Windows Vista 、 Windows XP 、 Windows 2000 、 Windows ME and Mac OS	9
4.2 Using in Windows 98SE	9
4.3 Formatting HDD	10
5. OTB Function	11
6. FAQ	11

Safety Warning

Please read this user manual carefully before using this product.

1. Always unplug the power cord before assemble Hard Drive.
2. Do not use a power adapter with different voltage rating. It will damage this product.
3. Keep this equipment away from humidity or any type of moisture.
4. Do not drop or shack the device.
5. Do not press or put any weight on this device.
6. Do not use any alcohol, thinner or benzene to clean this device.

SUN BRIGHT

User Manual

1. Introduction

ADP-SU33 is a compact-designed external device station for 2.5" or 3.5" SATA drives. No more tools to assemble HDD in an enclosure is needed. Set your HDD with the Docking is absolutely more convenient and safer than having your drive sit on the desk with SATA-to-USB adapters ! Compliance with USB2.0 & SATAII specification , ME601J provides a fast and easy way to expand more storage space to PC & NB by SATA or USB/USB2.0 interface.

2. Main Features

1. Supports 2.5"/3.5" SATA I/II HDD.
2. Hot-Swappable, Quick HDD Exchange.
3. Handy desktop docking in stylish looks.
4. USB2.0 up to 480Mbps , eSATA up to 3Gbps.
5. Friendly One-Touch-Backup feature.

3. Product Overview

3.1 Product Components

ADP-SU33 x 1

USB Cable x 1 、 eSATA Cable x 1 、 Power Adapter x 1

QIG x 1 、 Software Installation CD x 1

3.2 Minimum System Requirements

USB Mode

Windows® 98SE / ME / 2000 / XP / Vista

233 MHz Pentium® II or higher

64 MB RAM (128 MB recommended)

USB 1.1 Port (USB 2.0 recommended)

CD-ROM drive for installation

Mac OS

Mac OS X 9 or above

eSATA Mode

Windows® 2000 / XP / Vista

Notes : Some motherboards didn't support HOT-plugging features in default. You can try to follow the steps to connect ADP-SU33 when you met trouble with eSATA port.

- 1. Enable SATA function in the system BIOS.*
- 2. Connect ADP-SU33 and computer with eSATA cable then power on ADP-SU33.*
- 3. Power on your computer.*
- 4. Check ADP-SU33 can be detected or not.*

◆ *If ADP-SU33 still can not be detected, it means your motherboard does not support eSATA function.*

SUN BRIGHT

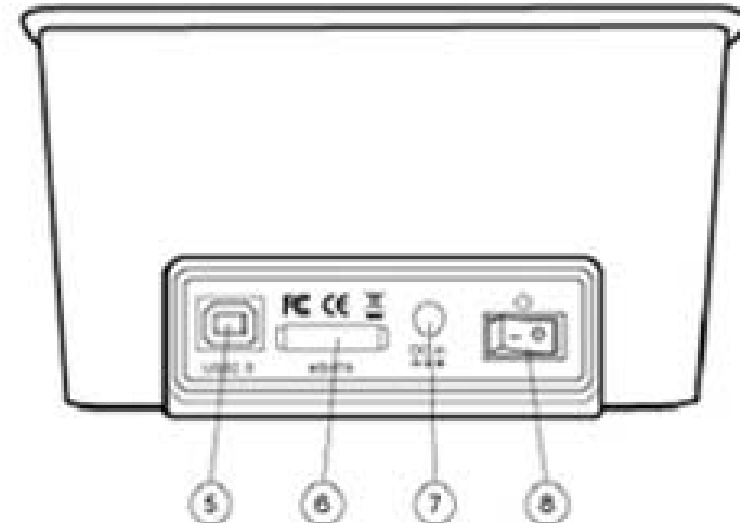
User Manual

3.3 Take a look to ADP-SU33

- ① Hard Disk Dock
- ② One Touch Backup Button
- ③ Power LED
- ④ Access LED
- ⑤ USB 2.0 Connector
- ⑥ eSATA Connector
- ⑦ DC Jack
- ⑧ Power Switch

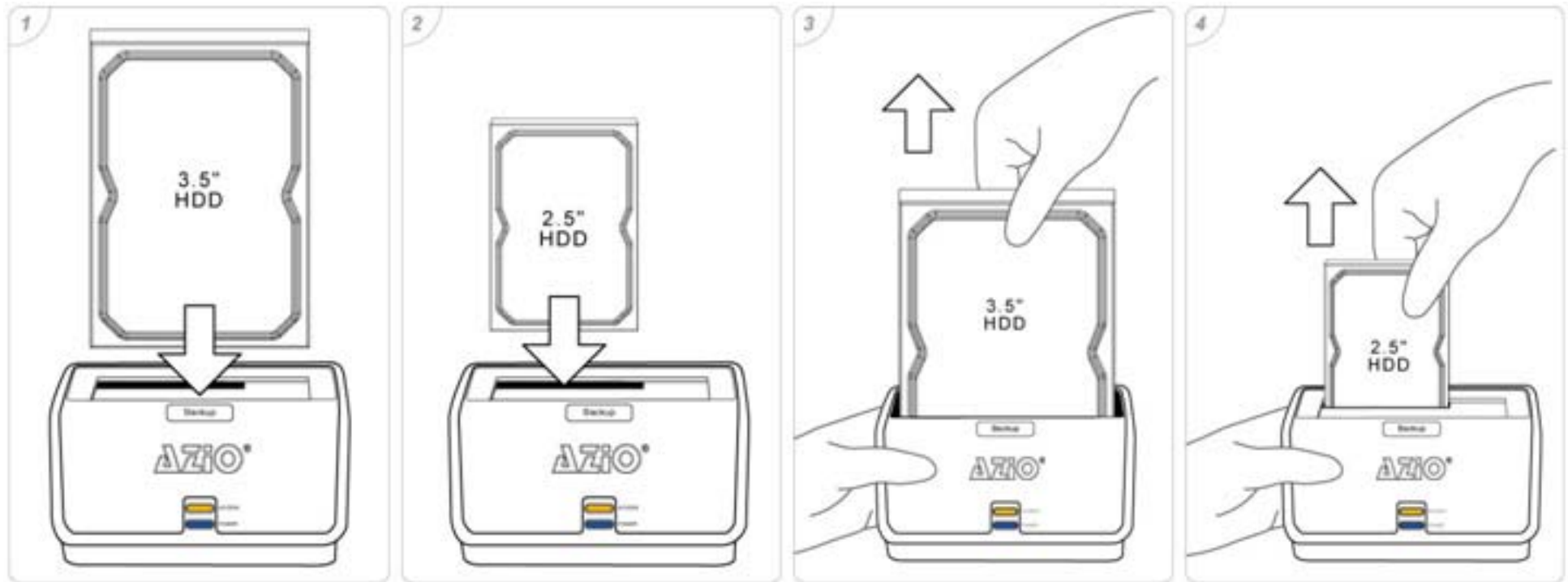
Note: LED indicator behavior explanation:

- 1. Power LED will be always lighted up after power on the docking.*
- 2. Access LED will be blinking when starting read/write access.*



3.4 Start to Assemble

1. The docking supports 2.5" or 3.5" SATA HDD directly plug in to the SATA connector , which is instructed by below photo 1 and 2.
2. You can easily hot-swap the HDD by directly pulling it out from the docking , which is instructed by below photo 3 and 4.



SUN BRIGHT

User Manual

4. Using the Docking

4.1 Using in Windows Vista 、 Windows XP 、 Windows 2000 、 Windows ME and Mac OS

The Docking can work under Windows Vista/XP/2000/ME and Mac OS without any extra driver.

4.2 Using in Windows 98SE

1. Find Windows 98 driver , it is ” SPIF225_Installer.exe ” which you can find from driver CD



2. Connect USB cable to Docking & PC, USB icon will appear in the system tray.



3. To Safely remove the disk, please right click the USB icon and click “Safely Remove”.



Note : 1. If you can see the USB icon, but can't find new disk appearing in your computer, please check if the hard disk was partitioned.

2. If HDD has been partitioned , please make sure the format of your HDD is FAT32. Because Windows 98 doesn't support NTFS format of HDD.

4.3 Formatting HDD

1. Right click **My Computer** and select **Manage**.
2. **Computer Management** window will pop up. Click **Disk Management** under **Storage**.
3. **Computer Management** window will list all the disks in the computer.
4. Right click on partition disk and click **New Partition**.
5. **New Partition Wizard** will be shown, click **Next**.
6. Select **Primary partition** or **Extended partition** which you want, click **Next**.
7. Fill in the numbers of capacity that you prefer to partition, click **Next**.

Note : Format tool was providing by Windows , the maximum capacity of FAT32 is 32GB.

8. Select **Assign the following drive letter**, click **Next**.
9. Select **Format this partition with the following settings** and choose the **File system** which you want.
10. You can enter the **Volume label** that you want. Choose **Perform a quick format**, click **Next**.
11. You can see a new partition in the **Disk Management**.
12. The new disk can be seen in your computer.

5. OTB Function

One Touch Backup (OTB) is the file backup function between the external drive and PC. You can use it to backup your file from PC to the Docking. OTB will create a new folder "FilesBackup" to save your files when you. You can select the target files to save to others partition with the OTB backup.

To use OTB function, please install OTB tool from the installation CD first. The operation manual of OTB can be seen in the tool folder of OTB after successful installation.

Note: OTB function only can be supported on USB mode!!

6. FAQ

About the Hard Disk :

1. I can only find the USB tray icon properly in the system tray, but can't find the hard disk within "MY COMPUTER" after hardware installation ?

A: Please make sure the HDD has been initialized and partitioned after hardware installation. Please refer to section **4.3 Formatting HDD**.

2. Does the Docking have any compatibility issue with any 3.5 inches SATA HDD ?

A: The Docking might have compatibility issues with some old type 3.5 inches SATA HDDs , but no problem with new type 3.5 inches SATA HDDs.

3. What is the MAX. Capacity of FAT32 format ?

A: Formatted through the Disk Management tool provided by Windows systems, the maximum formatted capacity of FAT32 is 32GB.

4. Does the Docking supports multiple partitions with different formats (FAT32 or NTFS) ?

A: Yes. The Docking can support multiple partitions with different formats. You can format it under FAT32 and NTFS depending on your demand. Only under Windows ME and Windows 98SE , we recommend that it's better to utilize FAT32 FORMAT to all partitions because NTFS FORMAT is not supported by these two OS systems.

About the USB Disk Function :

1. Does the Docking support USB bus-power ?

A: No. It doesn't support USB bus-power , the external power supply 12V 3A is mandatory.

About the WINDOWS OS :

1. I can't find my Docking under Windows 98 system. Does it support Windows 98 system ?

A: Yes, it supports Windows 98 system. Please install the proper Windows98 drivers before starting using the Docking. Please refer to the FAQ section “**About the Hard Disk**”